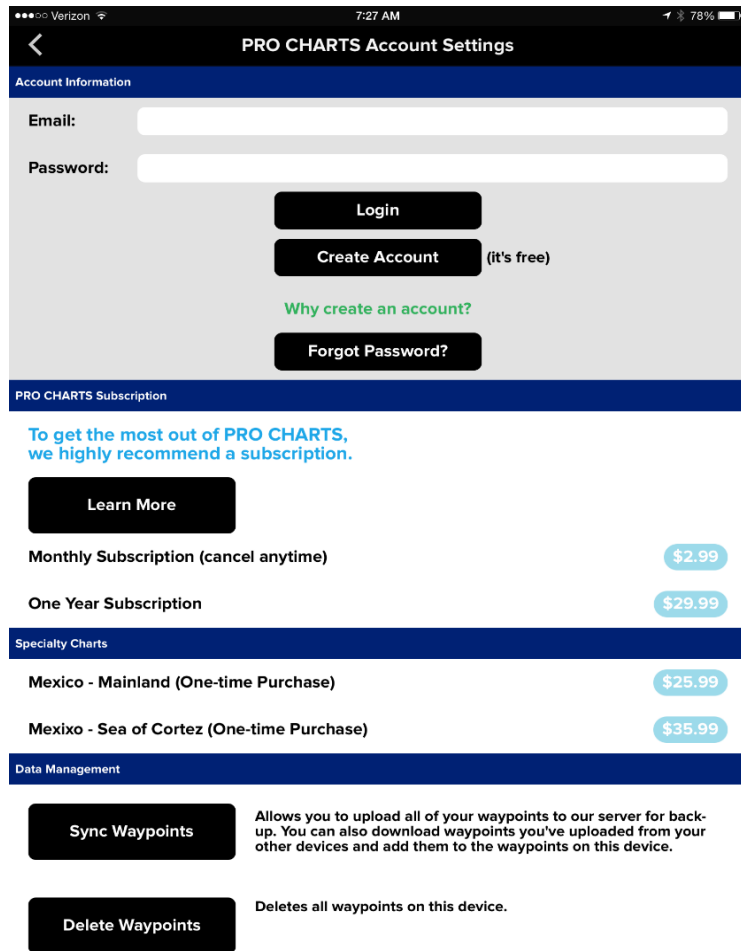


Getting Started

After downloading the PRO CHARTS™ app, you will first want to create a free User Account which

- 1) enables us to view your information so we can offer tech support,
- 2) allows you to sync your subscription across multiple devices,
- 3) allows you to back-up your data on our servers, and
- 4) allows us to send you important updates and notifications.

To do this, touch the menu button in the top left corner of the main screen and select **Account**. Enter your email address and a password, then click **Create Account**.



In addition to creating an account, you will want to purchase a subscription to PRO CHARTS™ so you can download and display nautical charts, utilize all of the app's rich navigational features, and receive all future upgrades and enhancements. We offer a standard annual subscription plus a monthly option so you can try the app for a shorter period of time at minimal cost with no obligation. All subscriptions have a 7-day FREE trial before you are charged.

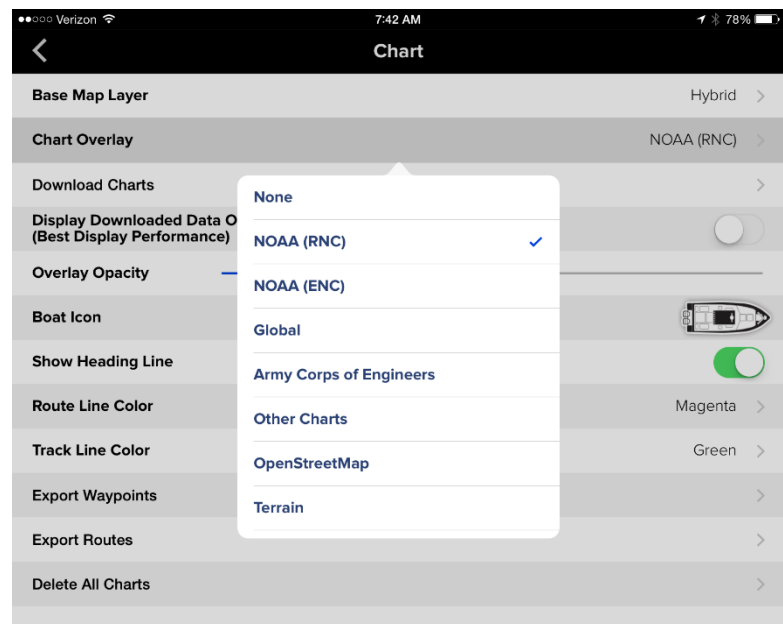
Initial Setup

After you have selected and purchased a PRO CHARTS™ subscription, you are ready to set up your charts. First, you will want to select a **Chart Overlay** and download chart data for your area to make sure it will be available later when you do not have a WiFi connection, i.e. while out on the water.

To begin, touch the menu button at the top left of the main screen and select **Chart**. Touch **Chart Overlay** to select the type of chart data you wish to display.

Within the U.S., you will probably want to start with either **NOAA (RNC)** or **NOAA (ENC)** depending whether you prefer the scanned NOAA raster chart images or electronically-generated ENC imagery.

You can also select **Road**, **Satellite**, or **Hybrid** as the underlying Base Map Layer which can be seen under the **Chart Overlay** data layer. Use the **Overlay Opacity** slide bar to determine how much of the Base Map Layer you want to see. In bright sunlight, it's best to slide the bar all the way to the right (100% opacity) for optimal visibility of the overlay charts only. After you have selected an overlay, close the menu to go back to the main screen.



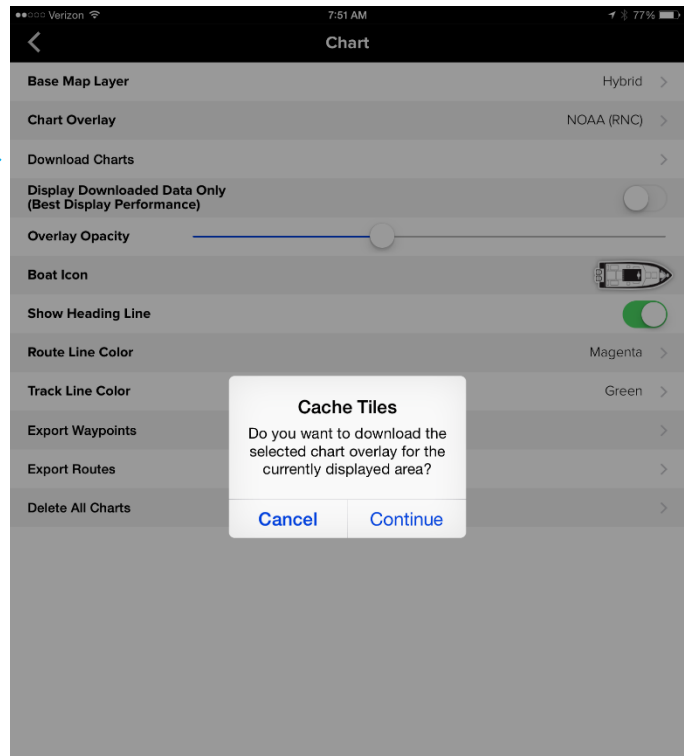
Next, pan and zoom the chart to display the area you wish to download. Keep in mind, NOAA chart files are very large so it's best to start with a small area (less than 200 square miles) to minimize the time it takes to download. With the desired area displayed on screen, touch the menu button and select **Chart** again. From the Chart menu, select **Download Charts** to begin downloading.

IMPORTANT: Whenever you are connected to WiFi, PRO CHARTS™ automatically displays both overlay and base map chart data even in areas you have not yet downloaded.

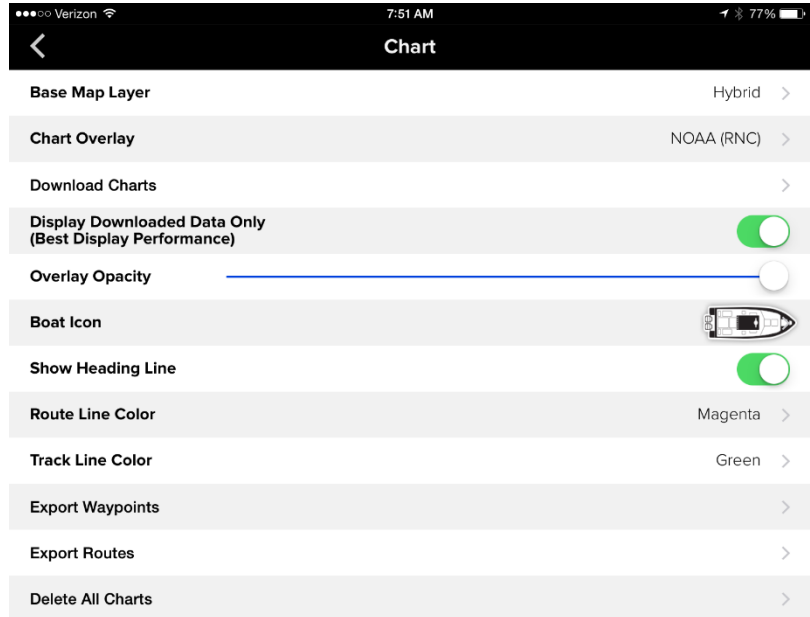
Although displayed charts are stored into memory, all zoom levels for that area are not

stored unless you specifically view them. This is why it is important to download chart data before heading out on the water. Downloading charts stores all zoom levels for the displayed area. If you do not download charts in advance, PRO CHARTS™ will attempt to download chart data on-the-fly (as long as you have a cellular connection with good internet access) as you pan and zoom to new chart views.

However, this is much slower than displaying chart data already stored on your device and you will notice delays when changing views. Even if your device is showing all bars for cellular access, that does not necessarily mean you are in range of good internet data access. If you have no cellular connection at all or you are out of range of internet data access, PRO CHARTS™ will not be able to display charts in areas not previously downloaded.

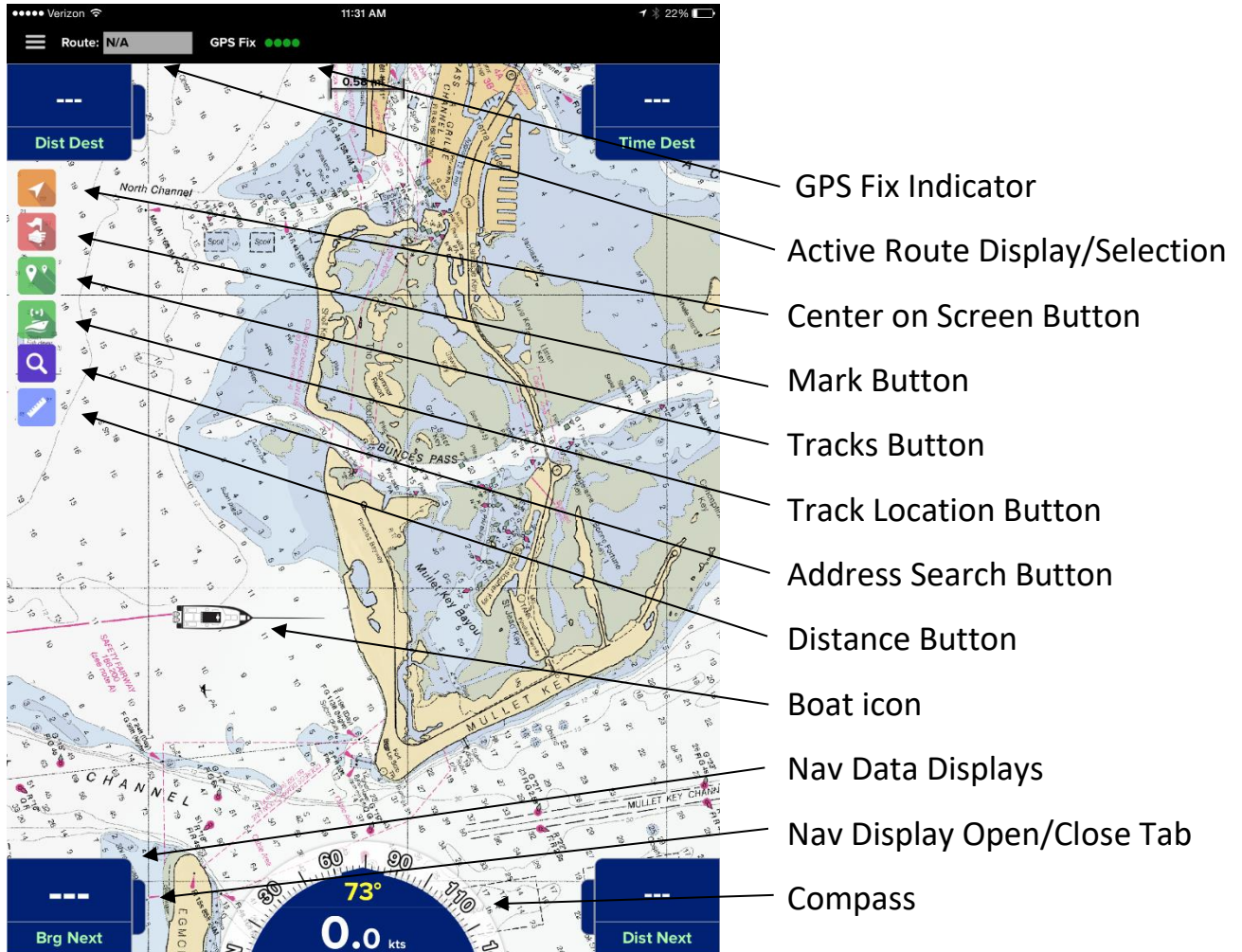


For the best display performance, you should always download charts in advance while at home with a good WiFi connection. Once you are out on the water, you can maximize the performance of the display by forcing the app to use only pre-downloaded data and not attempt to download new chart tiles on the fly. To do this, turn on the **Display Downloaded Data Only** button in the **Chart** menu. When you get back home, you may want to turn this feature off again so you can pan around and display other areas without having to download new chart data.



New charts are released by NOAA every seven days with updated data. To ensure that your downloaded charts are current, you should make it a habit of periodically purging old downloaded chart data and downloading new charts. To purge your old data, select **Delete All Charts** from the **Chart** menu. To download new **Chart** data, simply repeat the process of displaying the desired area on screen and selecting **Download Charts**.

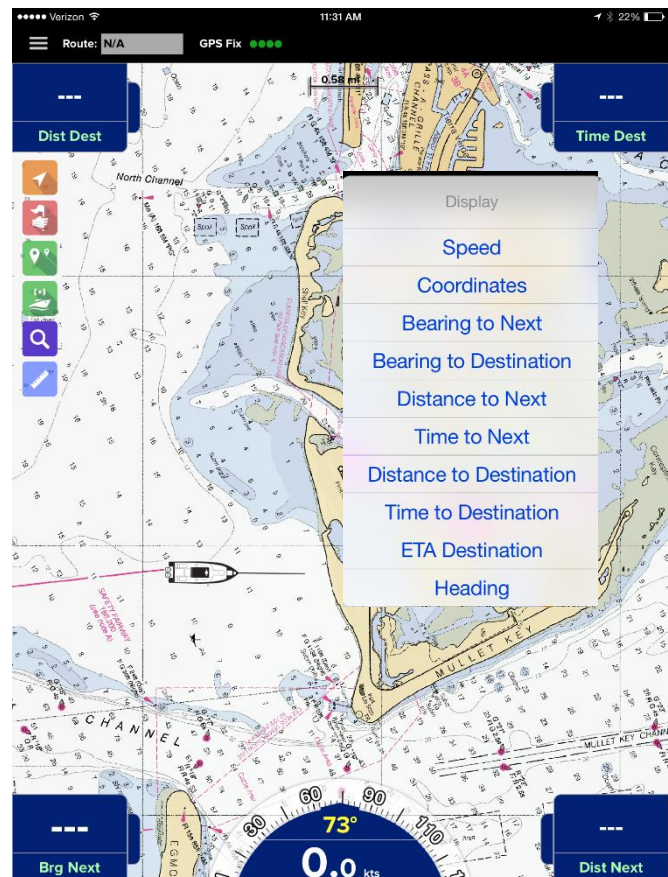
Main Screen



- The **GPS Fix Indicator** displays the signal quality of the GPS reception.
- The **Active Route Display** shows the route currently active for navigation. You can touch the display to select a different saved route.
- The **Center on Screen** button toggles between the following view options: 1) The map does not follow your movement. In other words, the map does not move unless you touch the screen to pan. 2) The map moves automatically to follow your movement. 3) The map follows your movement and rotates when your heading changes. Whenever option 2 or 3 is selected, PRO CHARTS displays

red visual alerts around any aids to navigation or obstructions that are within 1,000 feet of your position.

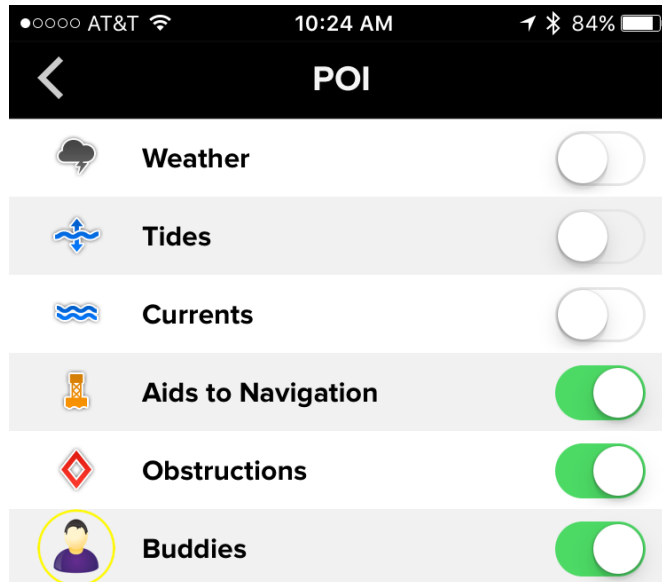
- The **Mark** button creates a new waypoint at your exact current location.
- The **Tracks** features displays and records a “track” of your movement. The Tracks button enables and disables this feature.
- The **Track Location** button enables or disables the ability of your **Buddies** to see your position.
- The **Address Search** button allows you to look up an address. You can then get driving directions or navigate directly to the address using the PRO CHARTS Routes feature.
- **Distance** button allows you to instantly see the distance between two points. When the button is enabled, you can touch any two places on the screen and the distance between them will be displayed.
- The boat icon shows your current position and orientation. Other icons can be selected in the **Chart** menu. The heading line extending from the front of the boat icon can also be enabled or disabled in the **Chart** menu.
- The **Nav Data Displays** show navigational information when a route is activated. You can select the data you wish to be displayed in each of the four displays by touching the center of the display.
- To hide or show any of the **Nav Data Displays**, touch the Open/Close tab.
- The **Compass** displays your current heading. When a route is active, a red heading



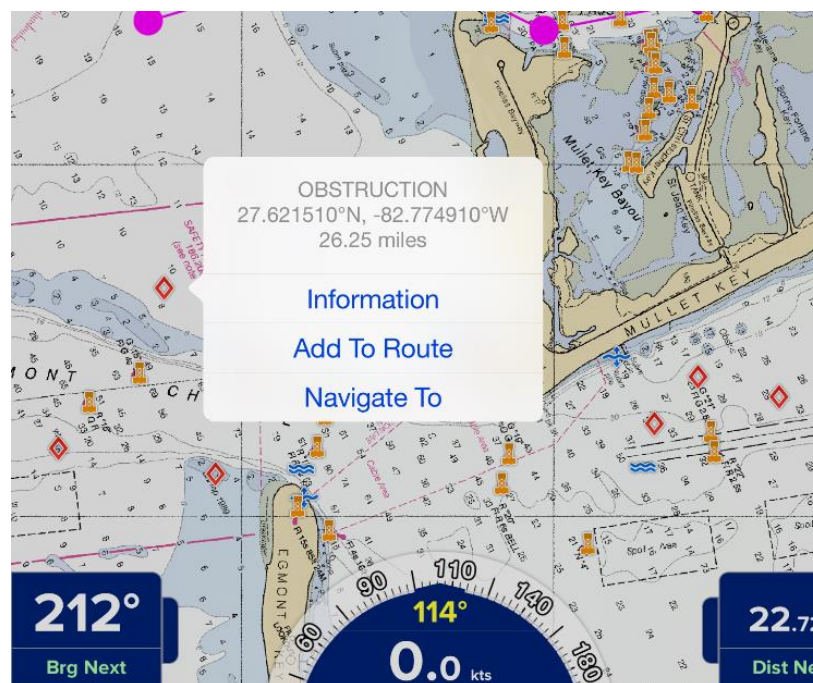
bug indicates the direction to the next route point or to the final destination if navigating directly to a Waypoint. For the most direct path, steer your boat so that the heading bug is at the top center of the **Compass**. If no route is selected, the heading bug will not be displayed.

Points of Interest

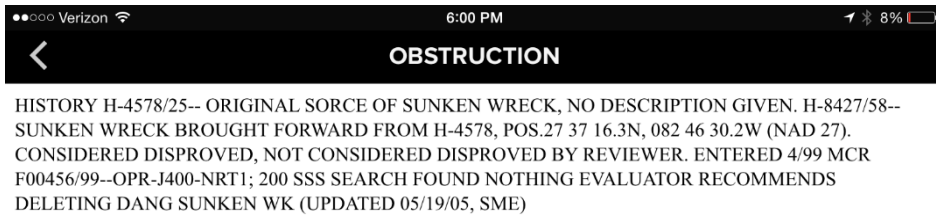
You can define **Points of Interest** to be displayed on the main screen in the **POI** menu.



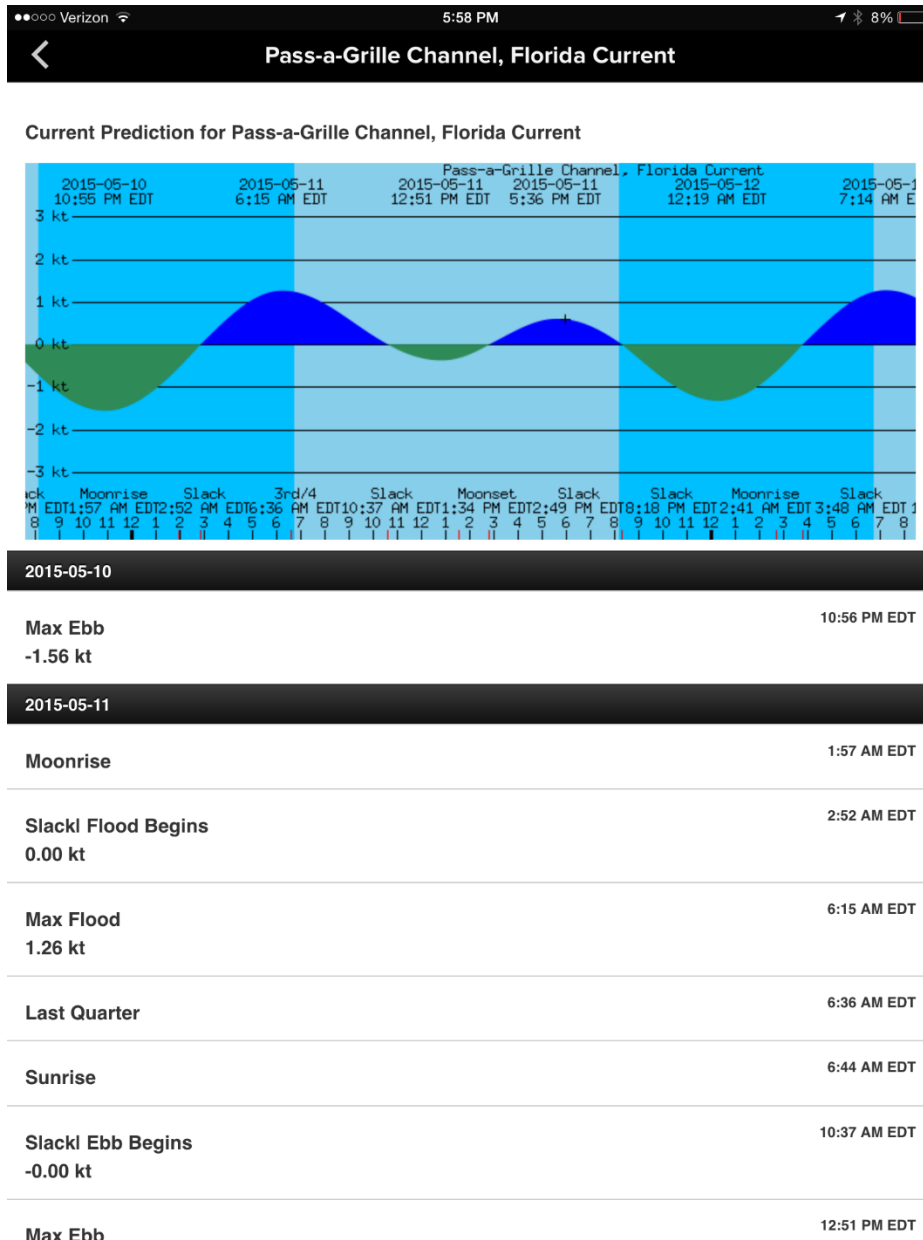
When **POI's** are displayed on the main screen, you can select them to bring up additional information.



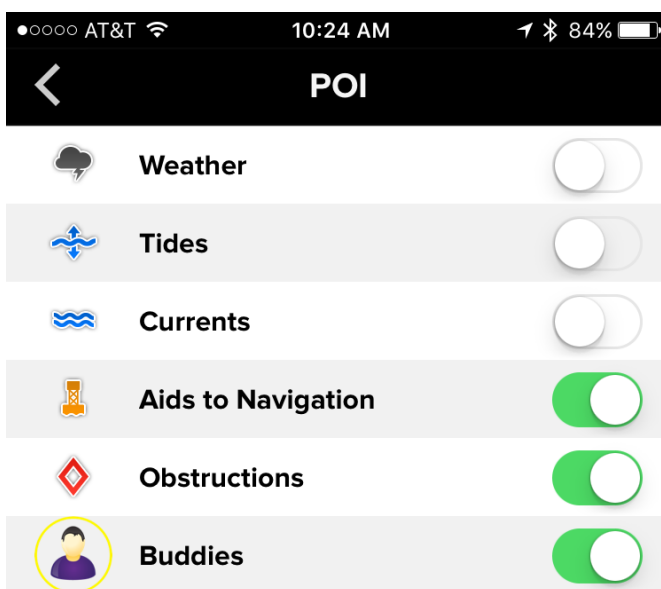
Selecting the Information button brings up information from NOAA's database about that point of interest.



The **Weather, Tides, and Currents POI's** display up-to-the-minute information from various local data sources.



The **Buddies POI** allows you to see other PRO CHARTS™ users that are currently sharing their location. If you don't want to see other Buddies, you can disable this feature.



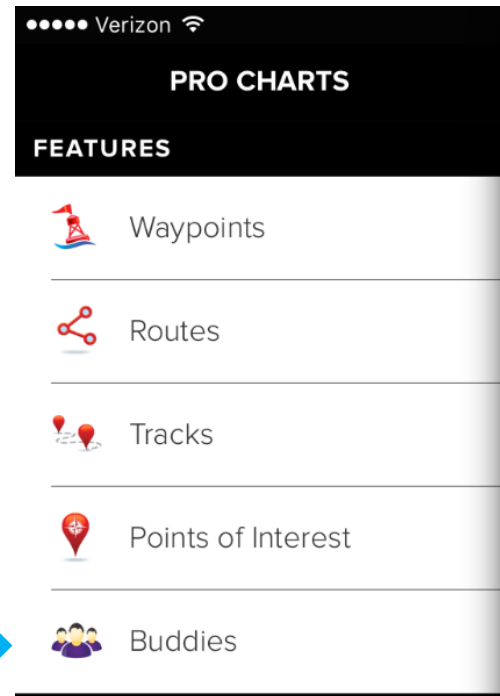
You can choose to share or not share your own location with the **Track Location** button on the main screen. When the button is green, other PRO CHARTS™ users can see your position as long as you are in cellular range with a data connection. When the PRO CHARTS™ app is closed, this feature is disabled so your location is no longer seen by other users.



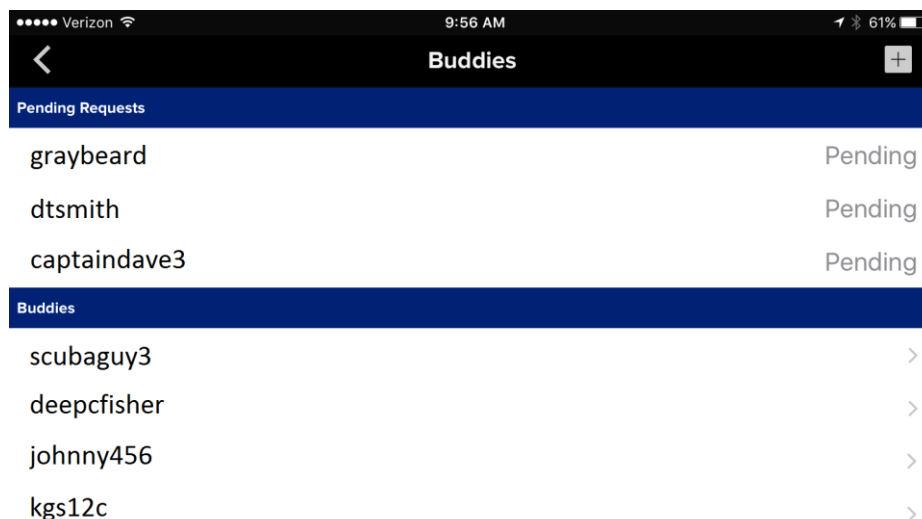
Buddies

With the **Buddies** feature, you can create a list of your friends so that you can see each other when using PRO CHARTS™. For example, if you want to meet up with a friend that anchored at the beach with many other boats, you can use this feature to see exactly where they are and head toward them. More importantly, the Buddies feature records your location history while you have the **Track Location** feature enabled. In an emergency, your buddies could forward this information to the Coast Guard or other authorities so they can use it to search for you.

To get started using the feature, select the **Buddies** button in the main menu.



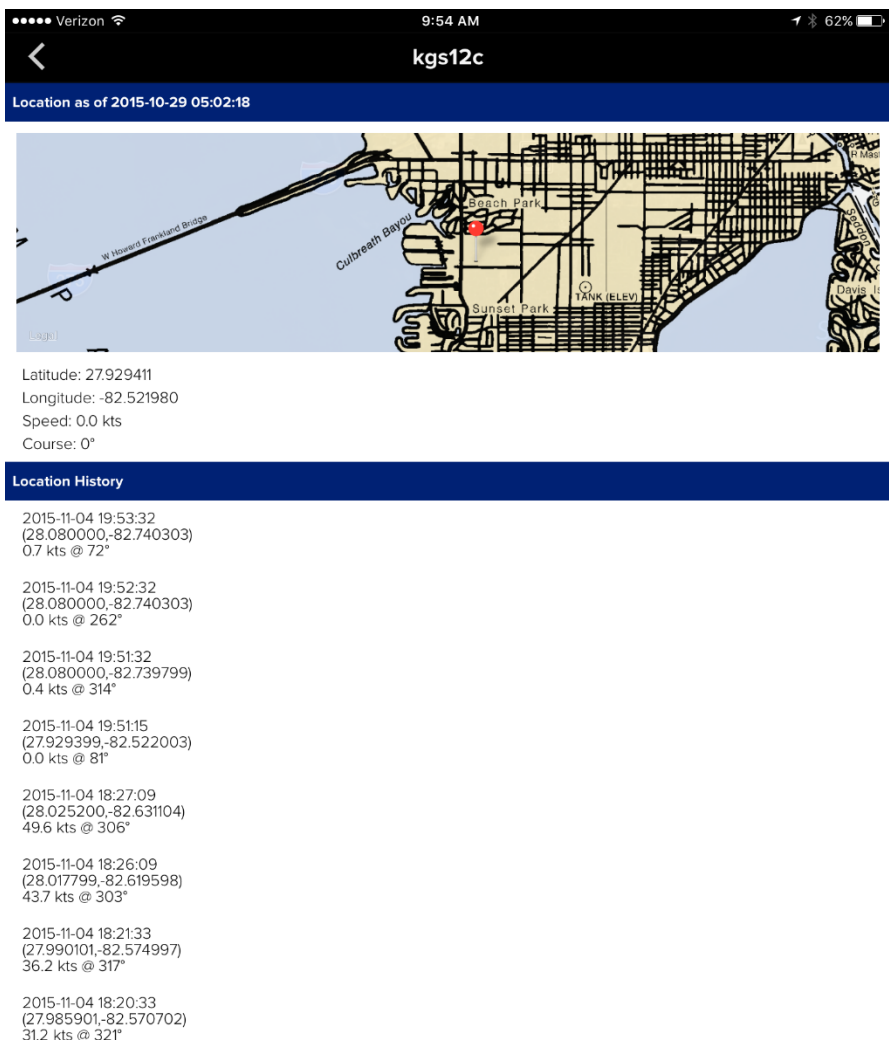
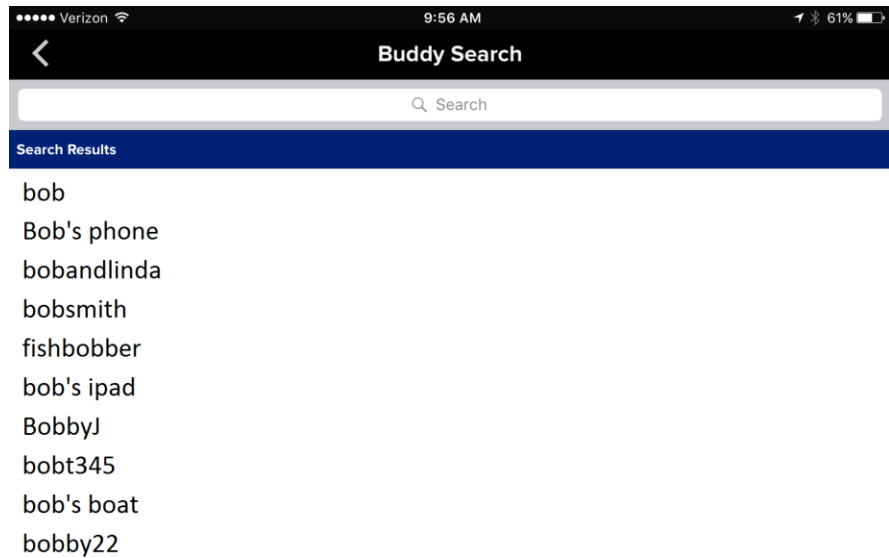
From the **Buddies** menu, you can add new Buddies, see your pending requests, accept requests from others, and bring up information about your current Buddies.



To send a **Buddy Request** to another PRO CHARTS™ user, touch the + button at the top right of the screen. Type any part of your buddy's PRO CHARTS™ username to bring up a list and select your buddy.

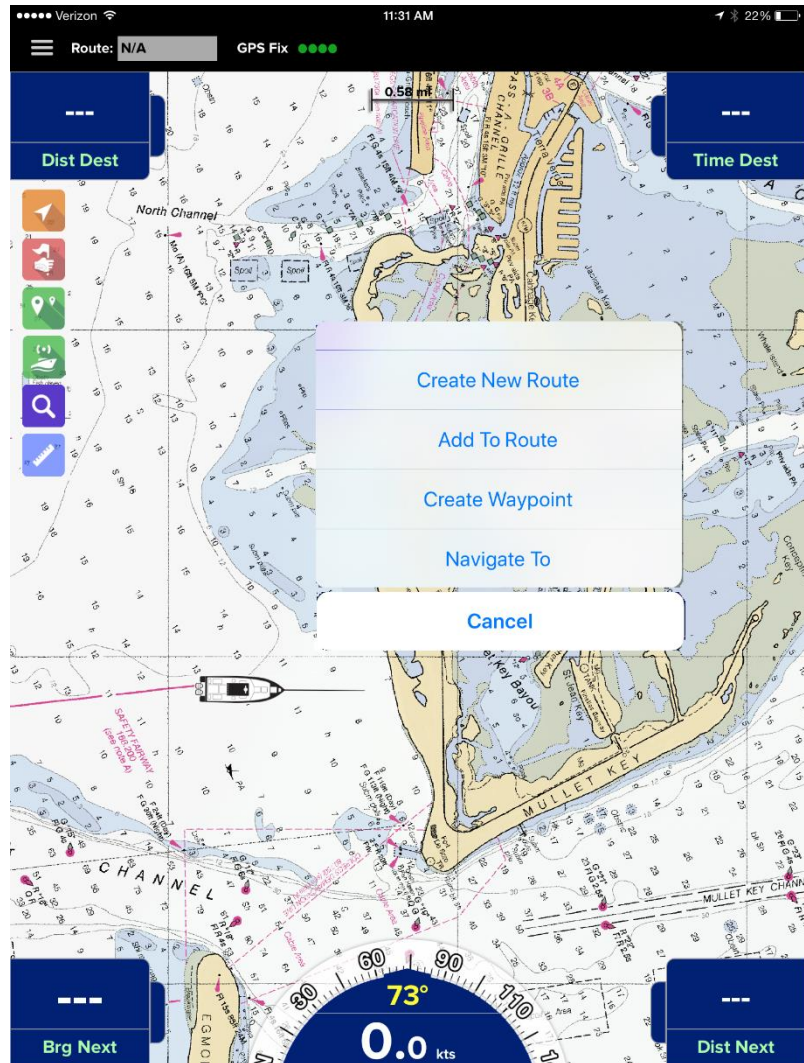
Your request will now appear as Pending on your buddy's menu to be approved.

After your **Buddy Request** has been accepted, you can see your buddy on the main screen and you can be seen by them. You can also select a Buddy from the **Buddies menu** to see their current position and their location history.

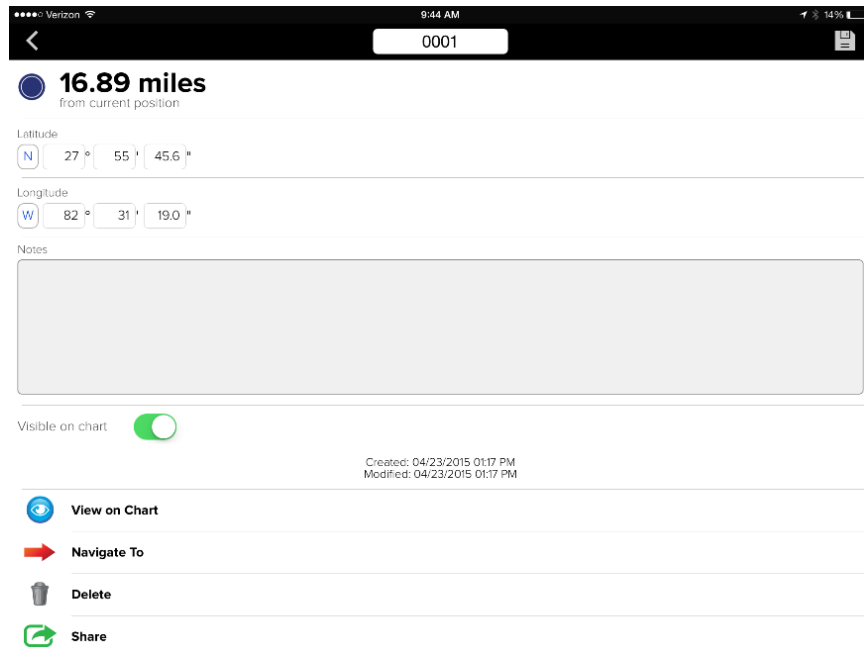


Waypoints and Routes

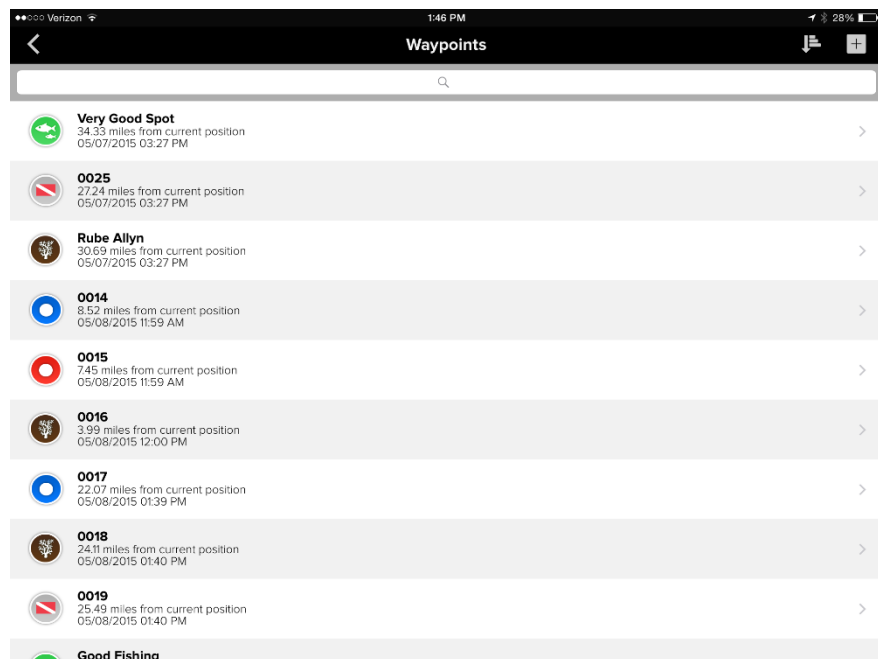
- **Waypoints** and **Routes** can be created from the main screen by touching and holding a point on the screen to bring up the Route/Waypoint window.
- Selecting **Create New Route** creates an initial route point at that location.
- If a Route is already displayed, **Add to Route** adds a new route point to the end of the current Route. If no other Route is currently displayed, an initial route point will be created at that location.
- Selecting **Create Waypoint** creates a User-Defined Waypoint at that location.
- Selecting **Navigate To** hides the current active route (if any) and creates a Route from your current position to that point.
- Touching an existing Waypoint prompts you to select **Add to Route**, **Navigate To**, **Edit Waypoint**, or **Delete Waypoint**.



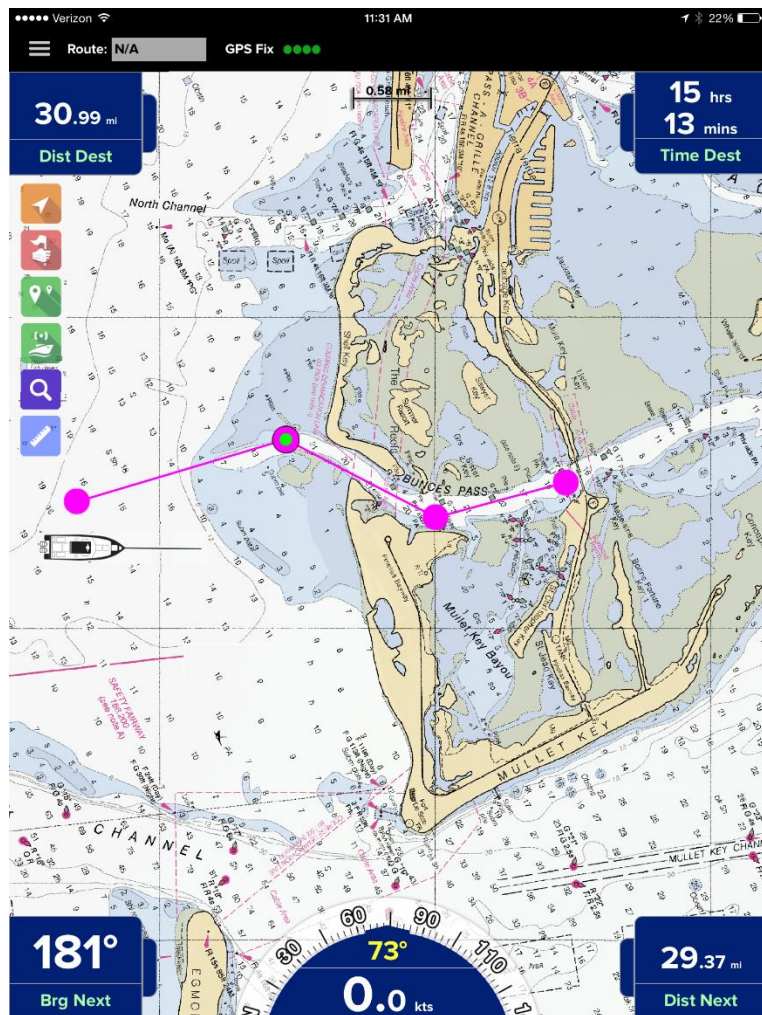
- Selecting **Edit Waypoint** brings up the Waypoint Editing menu where you can 1) rename the Waypoint, 2) change the icon, 3) change the lat lon information, 4) add notes, 5) choose whether or not you want the Waypoint to show on the chart, 6) close the menu and show the Waypoint centered on the screen, 7) navigate directly to the Waypoint, 8) delete the Waypoint, or 9) share the Waypoint with others.



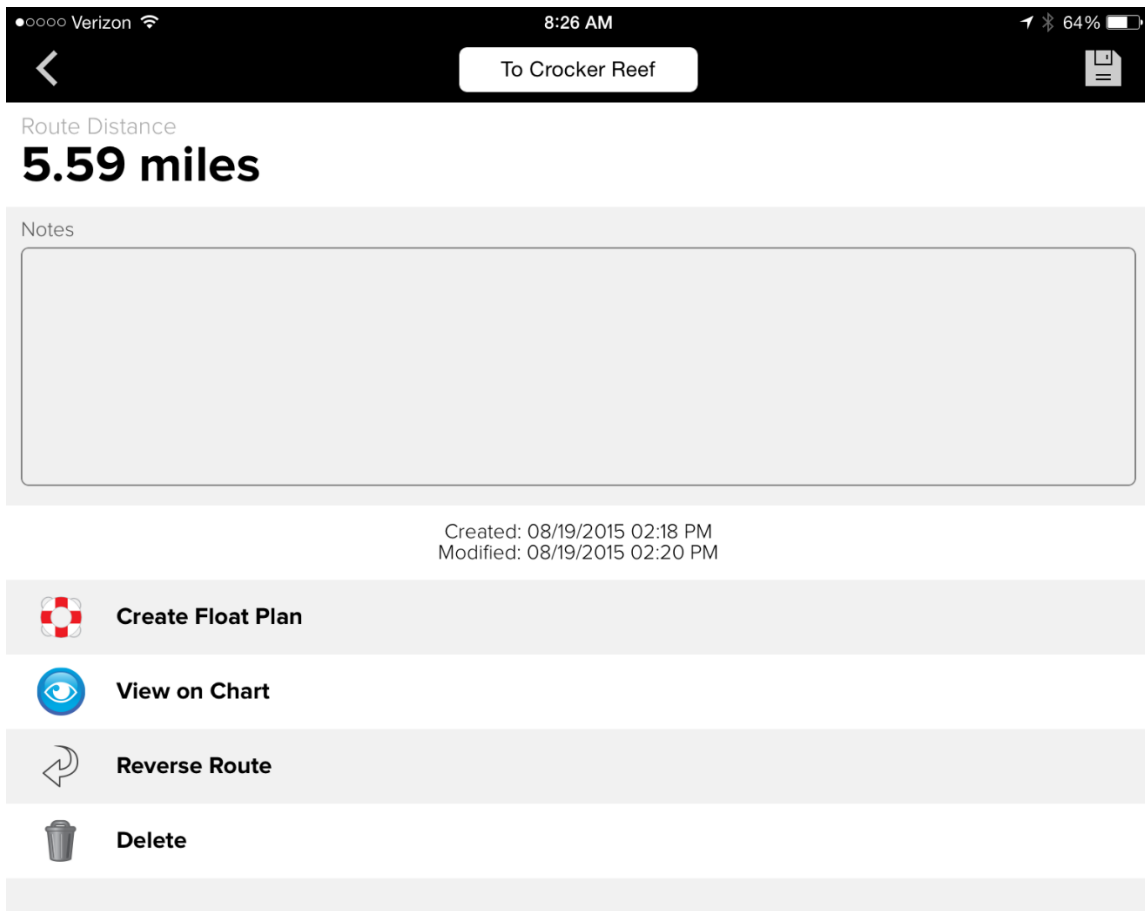
- You can also add new **User-Defined Waypoints** from the **Waypoints** menu. Clicking the button at the top right of the menu creates a new Waypoint so you can enter your own lat lon information. If you are entering numerous waypoints from a list, you will find this to be a much faster method for adding them.



- As soon as a route point or Waypoint is added to a Route, the **Nav Data Displays** start showing navigation data from your current position to the next point on the Route (indicated with the green dot). If no route is active, the displays will show dashes.



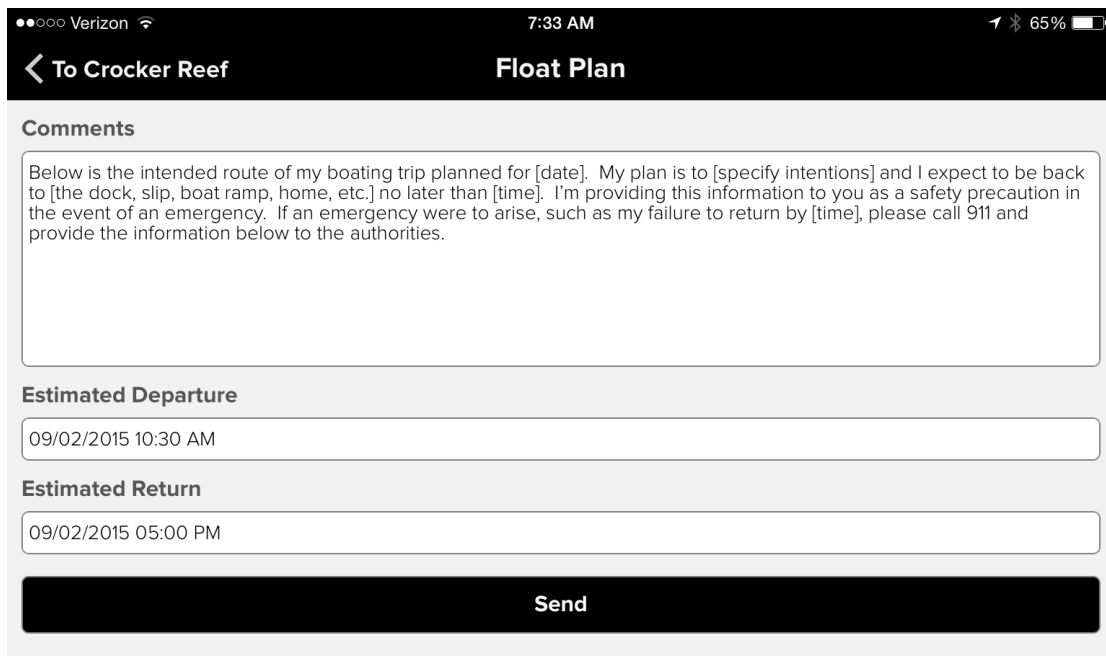
- Any route point can be moved on screen by touching and holding then dragging the point to a new location.
NOTE: User-defined Waypoints cannot be dragged and moved.
- Touching and holding the Route line breaks the line and allows you to add a new route point at that location.
- Briefly touching the Route line brings up a pop-up menu asking if you want to hide the current Route or reverse the Route.
- Touching an existing route point brings up a pop-up menu asking if you want to remove the point from the Route or Save the point as a User-defined Waypoint.
- To save the Route currently displayed on screen, touch the **Settings** button in the top left corner of the screen and select Routes from the menu. Select the Route from the list to open the **Route Edit** menu.



From the Route Edit menu, you can 1) change the name, 2) add notes, 3) create a **Float Plan**, 4) select **View on Chart** to close the menu and begin navigating the Route, 5) select **Reverse Route** to create a new Route in the reverse order of the current Route, or 6) **Delete** the Route. Touch the Save button in the top right to save your changes.

IMPORTANT: Creating a **Float Plan** is an important life-safety feature we highly recommend you use on every boat outing. A **Float Plan** is a summary of your intended trip that can be sent to a friend or family member which can then be provided to responders in an emergency. The **Float Plan** includes lat lon coordinates for all points along the route, your expected departure and return times, and comments about your intentions during the trip. In an emergency situation, this information could be critical in helping emergency personnel pinpoint an area to start searching for you.

Creating a **Float Plan** is simple. Just select the “**Create Float Plan**” for any Route to bring up the following window.



Verizon 7:33 AM 65%

[← To Crocker Reef](#) **Float Plan**

Comments

Below is the intended route of my boating trip planned for [date]. My plan is to [specify intentions] and I expect to be back to [the dock, slip, boat ramp, home, etc.] no later than [time]. I'm providing this information to you as a safety precaution in the event of an emergency. If an emergency were to arise, such as my failure to return by [time], please call 911 and provide the information below to the authorities.

Estimated Departure

09/02/2015 10:30 AM

Estimated Return

09/02/2015 05:00 PM

Send

Fill in the blanks of the sample Comments or write your own personal message with details about your intentions during the planned trip. Enter your expected departure and return times then click **Send** to email the plan to someone you trust in an emergency.